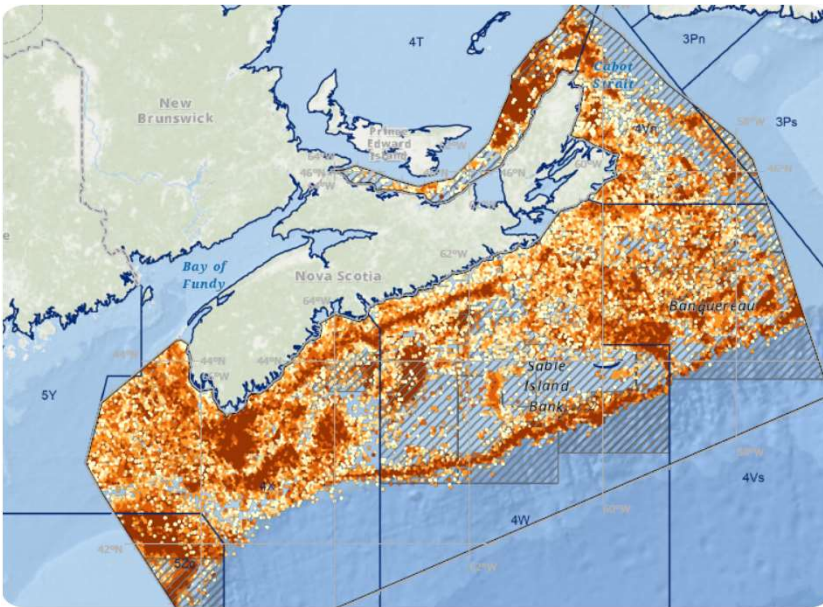




Perspectives of the Fishing Industry on Gainful Co-existence

Kris Vascotto

Starting Point



- Scotian Shelf is an ACTIVE place
- Fishery is sustainable and renewable
- Contributes \$ 2.5 billion annually for the local economy and employs tens of thousands
- Fishery far more active than other offshore wind jurisdictions –NSFAEE has identified low conflict areas - shore buffer makes sense!
- Offshore wind (and its impacts) in this region is a “Big Experiment”

Offshore wind must bring additive – not replacement value!

Impacts of removing 5,000,000,000 J/s from the system?



Scotian shelf is a wind-driven ecosystem:

Dispersal
Drives upwelling and circulation
Oxygenation and nutrient regeneration



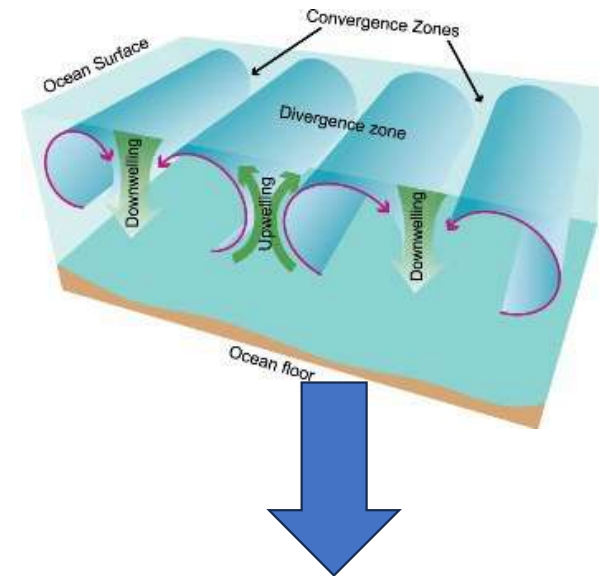
Broad Spatial Impacts

Stokesbury et al. – local development –
far afield impacts
Sediments, larvae, ecosystem
productivity



Strong Local Impacts

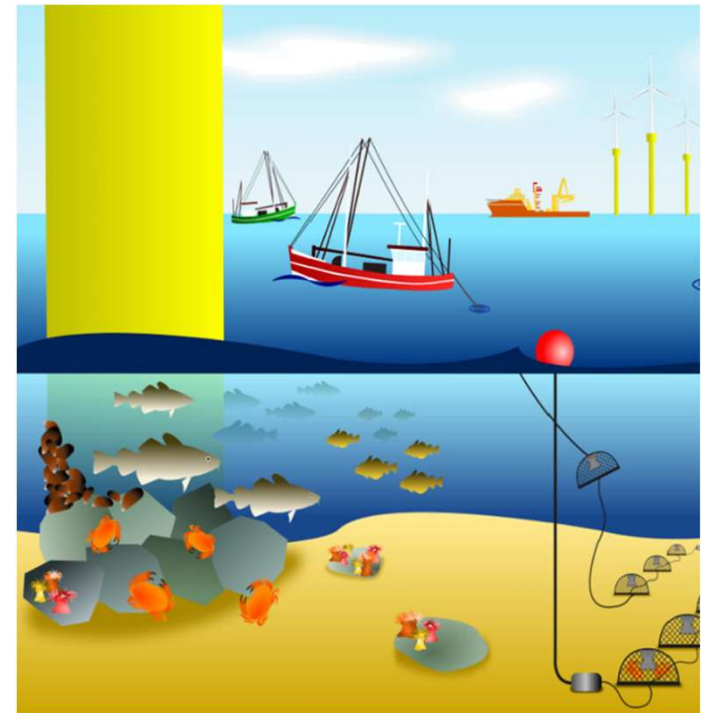
Reef structures/exogenous species
Locational Shift
Local oceanographic change



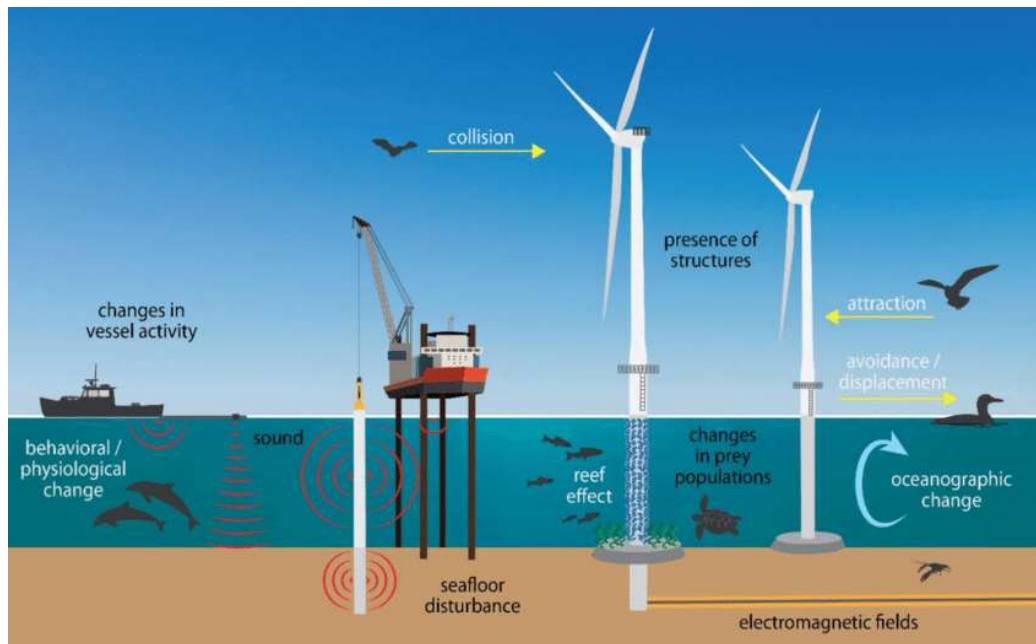
Akin to putting solar panels over a corn field and telling the farmer to 'keep at it'!

Direct Impacts Mitigation

- **Priority:** Keep fishing in the same areas, with the same gears, with the same economic returns
- Requires:
 - Good spatial understanding and accommodation
 - Offshore wind not impact the resource generally (unlikely)
 - Willingness to 'listen' – fishing is not all done the same
- Where this isn't possible:
 - Offset for lost fishing power
 - Offset for impacts inside/outside development area, including keeping shore-based business whole
 - No net economic loss for the harvesters for the life of the project
 - **Robust impact assessment for each project and a good plan required BEFORE authorizations given**



Indirect Impacts



- Harvesting energy WILL impact the ecosystem
- Impacts aren't yet known – and harvesters are asking questions:
 - Acoustic disturbance
 - Settling patterns
 - Fish-aggregating devices
 - Novel species
 - Migration/etc.
- Big blank spots that need to be acknowledged to bring comfort to those most likely to be impacted.

Need a mechanism to understand, mitigate and compensate for indirect impacts!

Path Forward



Full Assessment

Full Impact Assessments
Pre-construction assessment
in/outside of OSW areas
Separate climate and
development impacts



Plan for impacts

Discuss co-location feasibility
EARLY – avoid expropriation
Compensation WILL be
required to varying degrees –
need a structure at tenure-
stage
OSW-funded 'insurance' fund
as indirect impacts are realized



Prepare for the Unknown